



**MULTIPLE TRUSS LEDGER DETAILS**

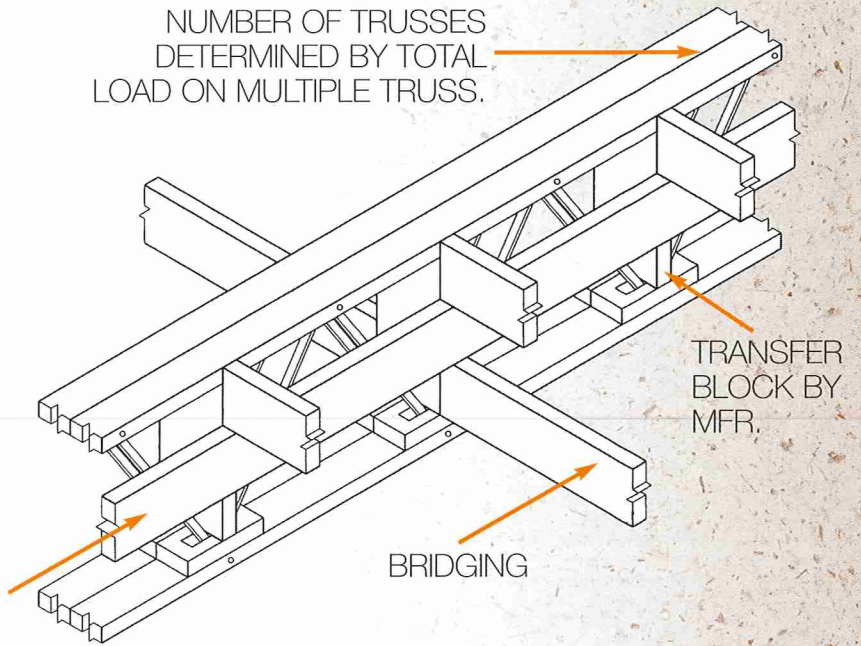
# Multiple Truss Ledger Detail

**ALTERNATE METHOD:**

Ledger flush to the top of truss and use joist hangers.

**NOTE:** Load transfer blocks required for multiple truss when load is from one side (as shown) or when load from above is not at the center line of multiple truss.

NUMBER OF TRUSSES DETERMINED BY TOTAL LOAD ON MULTIPLE TRUSS.

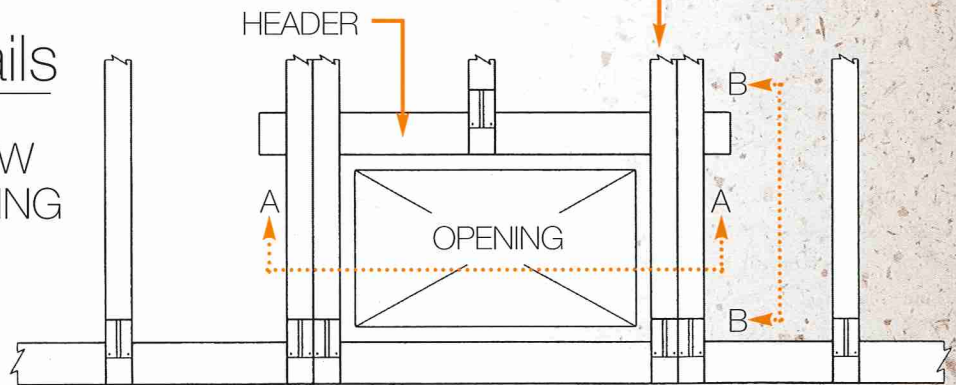


LEDGER FASTENED OR LET IN TO TRANSFER BLOCK AS REQUIRED BY IMPOSED LOAD

NUMBER OF TRUSSES DETERMINED BY TOTAL LOAD ON MULTIPLE TRUSS.

# Header Details

PLAN VIEW AT OPENING



HEADER 4x\_\_ OR 2-2x\_\_ BY OTHERS

SECTION A-A

BOLT (TYP.)

2-2x\_\_ AT EACH TRUSS BY OTHERS

SECTION B-B

BOLT (TYP.)