

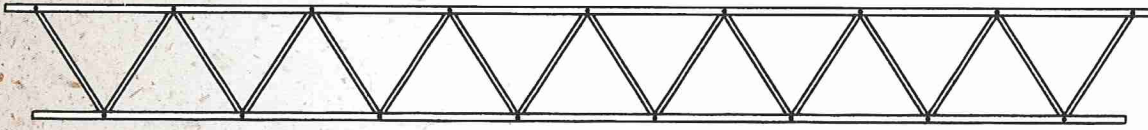


**WEB JOIST**

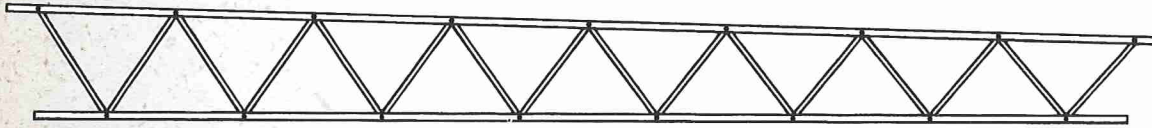
Inspired by Integrity

**BASIC PROFILES • SERIES DESIGNATION • PRODUCT DESCRIPTION**

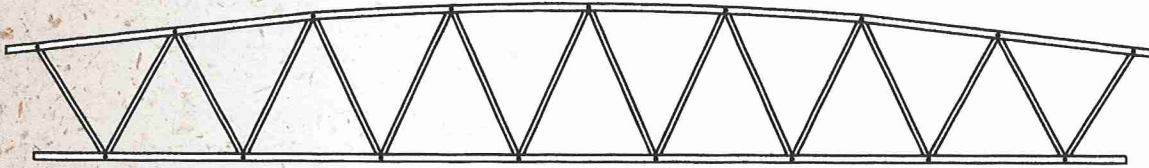
WEB JOIST TRUSS • DESIGN MANUAL



Parallel

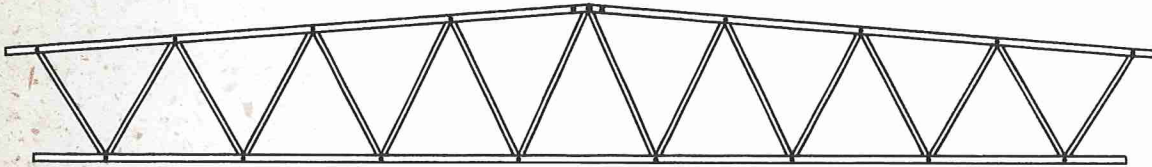


Taper



Pitched (with radius ridge)

Max. slope of top chord is 3/4" per foot for Version 1 truss. Radius not available for Version 2 truss.



Pitched (with ridge conn.)

**SERIES DESIGNATION**

The series designation (WJxx) refers to the size and grade of chord material used. The table below is in order of increasing load carrying capacity. Dimensions of truss chords shown on Page 5.

**Version 1 Truss**

- WJ21 = 2100f Both Chords
- WJ24 = 2100f & 2400f Mix or 2400f Both Chords
- WJ28 = 2400f & 2850f Mix or 2850f Both Chords

**Version 2 Truss**

- WJ-L6 = LAM-CHORD Both Chords

**PRODUCT DESCRIPTION**

**MATERIALS:** A Web Joist is a pin-connected truss manufactured with wood chords and steel webs. The Version 1 truss uses machine stress rated (MSR) 2X4 (1 1/2" x 3 1/2" net) chords. The Version 2 truss uses LAM-CHORD 3X4 (2 1/2" x 3 1/2" net) chords.

The chords are assembled using glued finger joints and are precision drilled and routed for the web connections. The steel webs are galvanized tubing with a 45,000 psi minimum yield

strength. Various gauges (19, 18, 16, & 14) of 1", 1 1/8", 1 1/4", and 1 1/2" diameter tubing are used. The pins are 3/8", 1/2", 5/8" & 3/4" diameter with a knurled upset to assure tight joints. Steel bearing angles are installed at truss supports.

**TRUSSES:** Web Joist trusses are available with top or bottom chord bearings, with or without cantilevers and in various profiles. The most common profiles are with the top and bottom chords parallel, tapered, or pitched of various depths.\* Accessory items such as bridging and pre-cut blocking are available from Web Joist manufacturers. The standard depth range is:

**Version 1 Truss** – Parallel 14" to 40" • Taper/Pitch 14" to 44"

**Version 2 Truss** – Parallel 22" to 48" • Taper/Pitch 18" to 52"

**QUALITY:** Web Joist trusses are manufactured only at WEB JOIST plants where a continuous quality control program assures that design, engineering, materials and production processes meet WEB JOIST standards.

\*Other profiles may be available upon request.